

FOREWORD

This instruction manual contains information and advice on the upkeep and how to get the best out of your coffee machine.

Before using the appliance all the indications in this manual must be read and rigorously observed to ensure the optimum performance and duration of your coffee machine, considering the user instructions as an integral part of the appliance and therefore keeping them for its whole duration.

TECHNICAL DETAILS

Width	mm	230
Depth	mm	347
Height	mm	407
Reservoir capacity	l	3.4
Net weight SR405	kg	13.7
Net weight SR405 Steam	kg	14.6
Voltage	V	220-240~
Coffee exchanger heating element input	W	800
Steam exchanger heating element input	W	1000
Electric pump input	W	48
Steam micro-pump input	W	16
Solenoid valve input in SR405	W	27
Solenoid valve input in SR405 V	W	36

WARNINGS

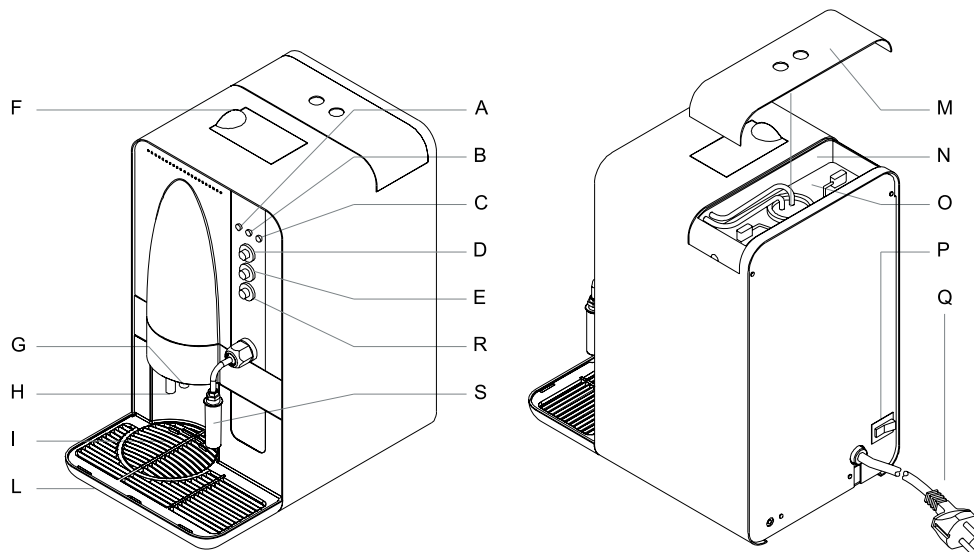
- The appliance must not be cleaned using solvents, thinners, spirits, etc. The use of warm water and neutral detergent with a soft cloth are ideal to maintain the external and internal parts in good condition.
- The appliance must not be cleaned using a water jet.
- Do not put the appliance in water
- Since the appliance produces heat it should be kept in a cool location with the best ventilation possible, for instance do not position it next to a radiator.
- The appliance is unsuitable for outdoor installation
- To ensure safe use the appliance not must be placed on a slope greater than 3°
- If the power cable is damaged, have it replaced by an After-Sales Service Centre, since a special tool is required for this purpose.
- Before any maintenance ALWAYS unplug the mains power cable.
- Only connect to an adequately earthed electrical plant.
- Keep the appliance away from children

The manufacturer and the distributor shall not be under any liability for malfunctions in the appliance, injury to persons and animals or damage to property arising from failure to comply with part or all of the warnings or instructions given in this manual and from improper, incomplete or negligence in maintenance and/or cleaning.

All technical assistance and maintenance can only be carried out by specialists authorised by the supplier of the coffee machine.

INSTALLATION

1. Unpack the machine and place it on a secure, stable worktop, making sure there is sufficient space to use it.
2. The appliance should be placed high enough to prevent easy access by children.
3. Do not position it in proximity to tight passageways or corridors to avoid it being knocked.
4. Check the appliance is complete and has not been damaged (if in doubt call an After-Sales Service Centre).
5. Take out the water tank (O) from its compartment (N), clean it, fill it with drinking water (preferably as soft as possible), replace it in the compartment (N) returning the tubes in the tank.
6. Check that the data on the rating plate correspond to your mains electricity supply (e.g. 230 Volts, etc).
7. Plug the power cable (Q) into the mains socket.
8. Switch the rear power switch (P) of the appliance to "I".
9. Wait for the green light (C) to go out before dispensing for the first time, to ensure that the correct temperature has been reached.



USER INSTRUCTIONS

- A** - Orange LED - Power indicator - lights up to indicate the power supply is on
- B** - Red LED - No water - lights up to indicate the water tank is empty
- C** - Green LED - Temperature - lights up to indicate that the working temperature has been reached
- D** - Hot water button
- E** - Coffee button
- F** - Pod compartment flap
- G** - Hot water tube
- H** - Coffee tube
- I** - Drainer
- L** - Drip tray
- M** - Water tank lid
- N** - Water tank compartment
- O** - Water tank
- P** - Power switch
- Q** - Power cable
- R** - Steam button.
- S** - Steam nozzle

COFFEE

- Place the cup under the coffee dispensing spout (H).
- Open the flap (F) located on top of the machine and fit a pod into the relative guide (fig.1).
- Close the flap (F) gently pushing it shut.

When the flap (F) is closed it pushes down the new pod, which in turn expels the previous one making it fall into the drip / pod tray (L) (fig.2).

- To dispense: press the coffee button (E) to start and when the desired quantity has been reached press it again to stop.

N.B.

- **The pod is placed correctly inside the machine solely by the fin fitted on the flap (F), NEVER use fingers to position the pod.**
- **NEVER open the flap (F) while the beverage is being dispensed.**
- **The machine is ready to dispense coffee or hot water after the green light (C) has gone out.**

N.B.

In the morning, any barley/tea pods that have remained in the machine for the night could require slightly more force to expel them, but should not cause other particular problems. To avoid this inconvenience, however, it is **of basic importance** to ensure that there are no pods inside the machine at the end of the day by expelling the last one using the provided empty pod (fig.3). The empty pod should obviously not be thrown away, but recovered and reused after being properly cleaned.

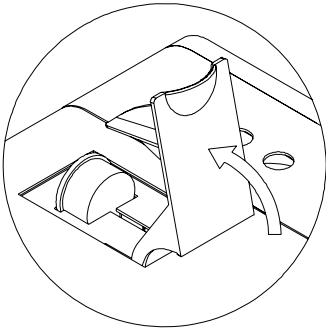


fig.1

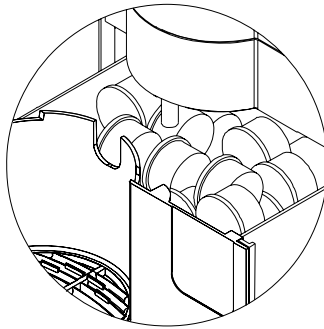


fig.2

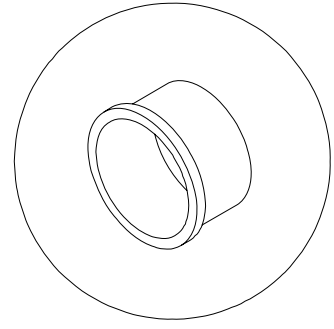


fig.3

HOT WATER

- Place a cup under the hot water tube (G)
- Press the hot water button (D) and wait for the desired quantity to be reached
- Press the hot water button (D) again to stop.

STEAM

- Place the cup under the steam nozzle (S)
- Press the steam button (R) until the required quantity has been reached
- Press the steam button (R) to stop

ROUTINE CHECKS

- Rinse out the water reservoir at least once a week.
- Drip / pod tray (L): empty and clean the tray frequently.
- Check the level of pods inside the drip / pod tray (L) through the slit in the front of the tray.

N.B.

- **Too many pods in the drip / pod tray (L) could impair / damage internal parts!! Empty out the tray every 15-20 pods.**

CLEANING

When cleaning the appliance, disconnect it from the electricity supply.

The housing and the steel parts should be cleaned with sponges and soft cloths to avoid scratching. Only use detergents that do not contain abrasive powders or solvents and do not use steel wool.

Drip / pod tray

ONCE EVERY 20 drinks empty out the drip/pod tray (L).
Periodically / at least once a week clean the drip/pod tray (L).

Empty pod

Cleaning cycles may also be carried out using the empty pod (fig.3). These cycles are recommended at least once a week, before leaving the machine unused for any length of time, or immediately after intensive use of BARLEY or TEA pods whose contents (very sugary) tend to form deposits that may be reduced with timely cleaning.

To carry out the cleaning cycle just press the coffee button (E) when the empty pod has been put inside the machine; leave the machine to operate for approx. 1 minute.

The empty pod will be expelled the next time a new pod is pushed in with the fin on the flap (F).

TROUBLESHOOTING

Appliance malfunction

Check that this is not due to:

- a power failure or blackout;
- an unplugged power cable;
- on/off switch on the rear of the appliance in position "0".

No coffee

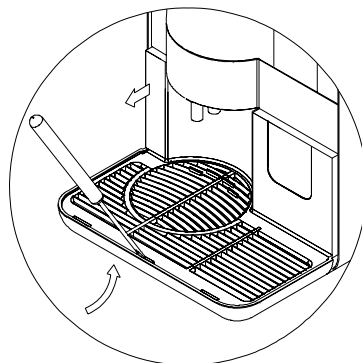
- check that the drip / pod tray is not too full. If it is, empty it.
- check that the red light(B) is not on. If it is, fill up the tank.

The flap (F) does not fully close

- check that the drip / pod tray is not too full. If it is, empty it.

The drip / pod tray cannot be removed

- the tray is too full of pods.
- pull out the tray by one centimetre and using a screwdriver release the grid (I) as shown in the figure.

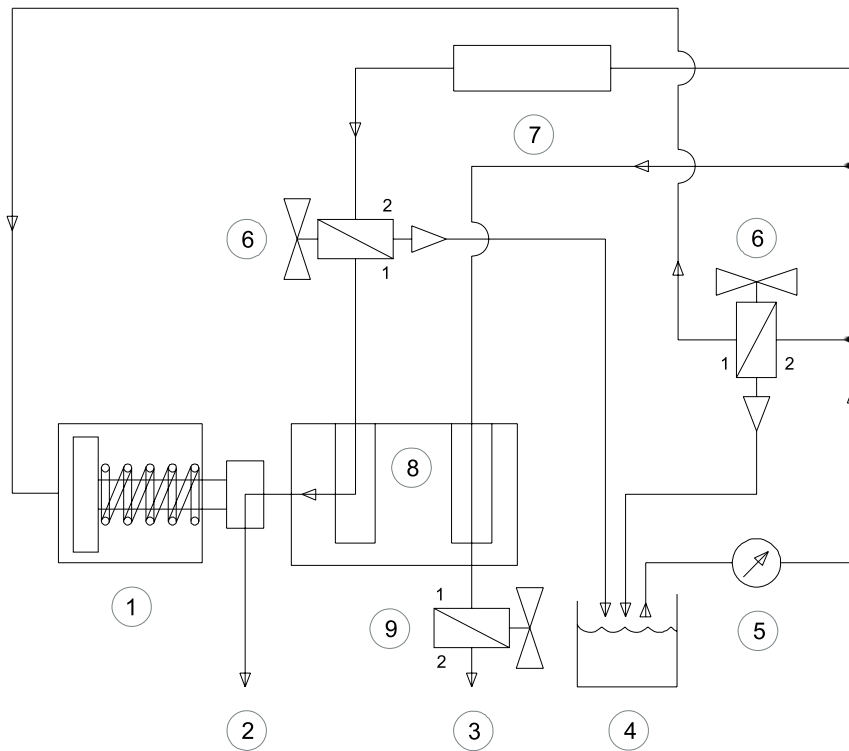


For any other causes, contact the coffee machine manufacturer or an After-Sales Service Centre

WARRANTY

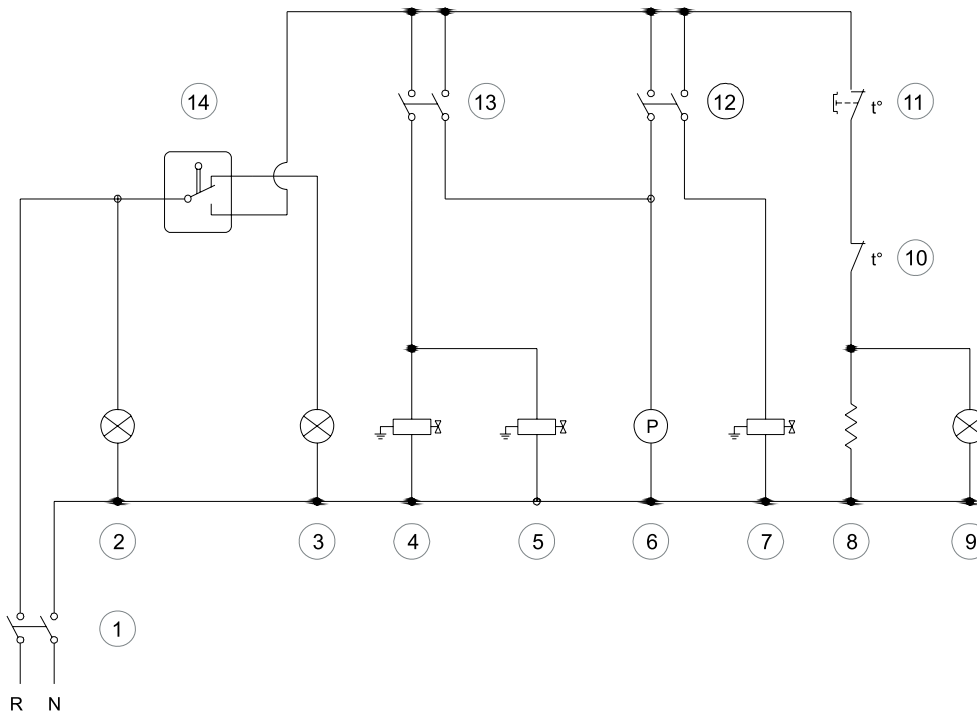
Any appliance that is purchased (keep the receipt, invoice, delivery note as proof) is covered by the statutory warranty: this covers the replacement free of charge of parts with manufacturing defects as ascertained by the After-Sales Service Centre or the manufacturer and so long as the appliance has not been improperly used or tampered with by unauthorised persons or nevertheless using incorrect components or techniques. Any defective parts shall be returned to the manufacturer.

WATER CIRCUIT DIAGRAM SR405



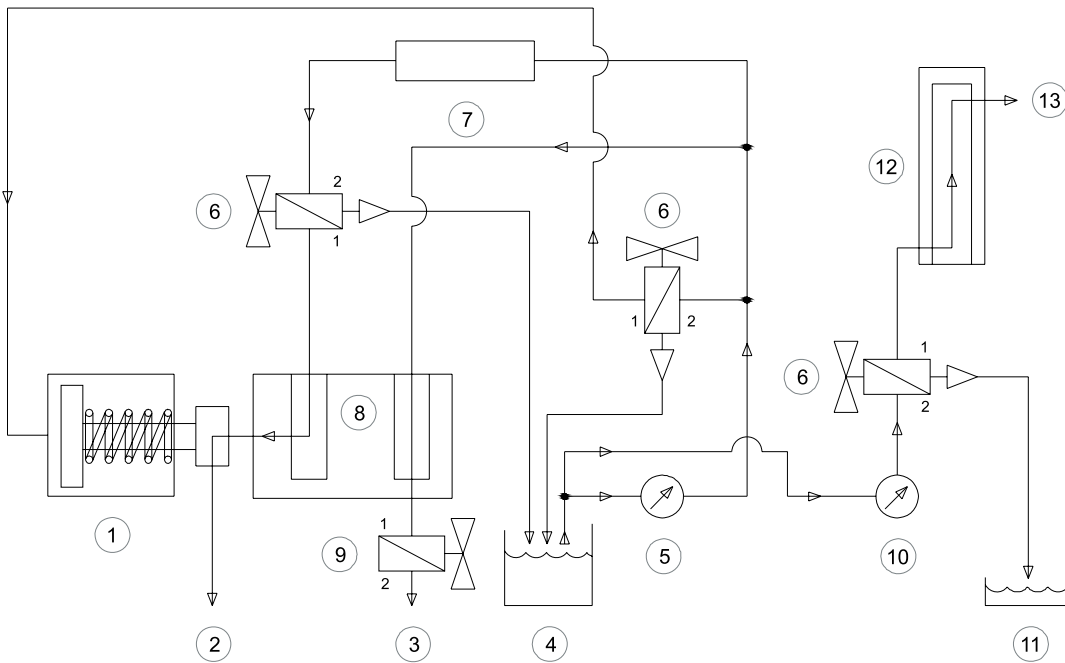
- 1 = Piston
- 2 = Coffee outlet
- 3 = Water outlet
- 4 = Reservoir
- 5 = Pump
- 6 = 3-way solenoid valve
- 7 = Single-acting valve
- 8 = Exchanger
- 9 = 2-way solenoid valve

WIRING DIAGRAM SR405



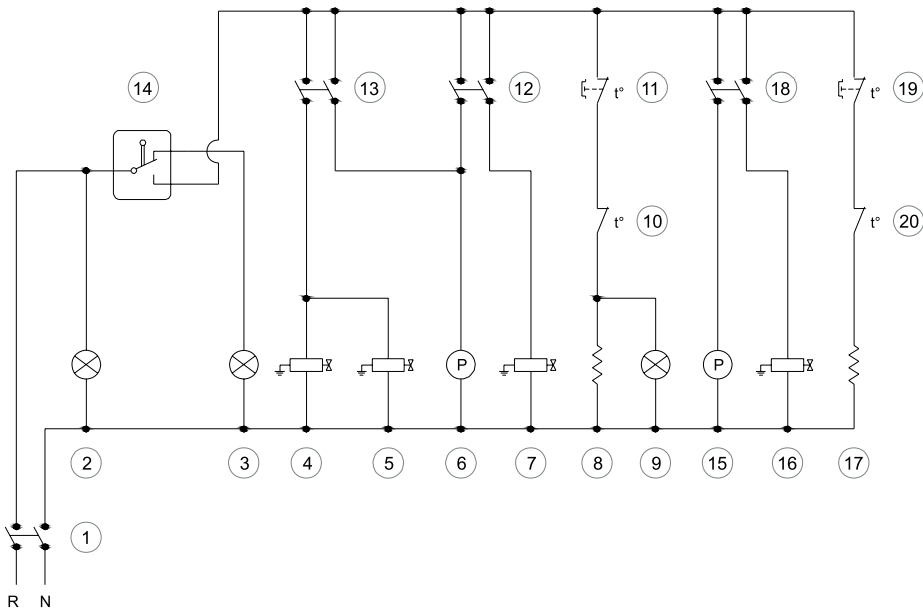
- 1 = On/off switch
- 2 = Power on light
- 3 = No water light
- 4 = 3-way solenoid valve
- 5 = 3-way solenoid valve
- 6 = Pump
- 7 = 2-way solenoid valve
- 8 = Heating element
- 9 = Temperature indicator light
- 10 = 95° automatic thermostat
- 11 = 125° manual reset thermostat
- 12 = Water switch
- 13 = Coffee switch
- 14 = No water microswitch

WATER CIRCUIT DIAGRAM SR405V



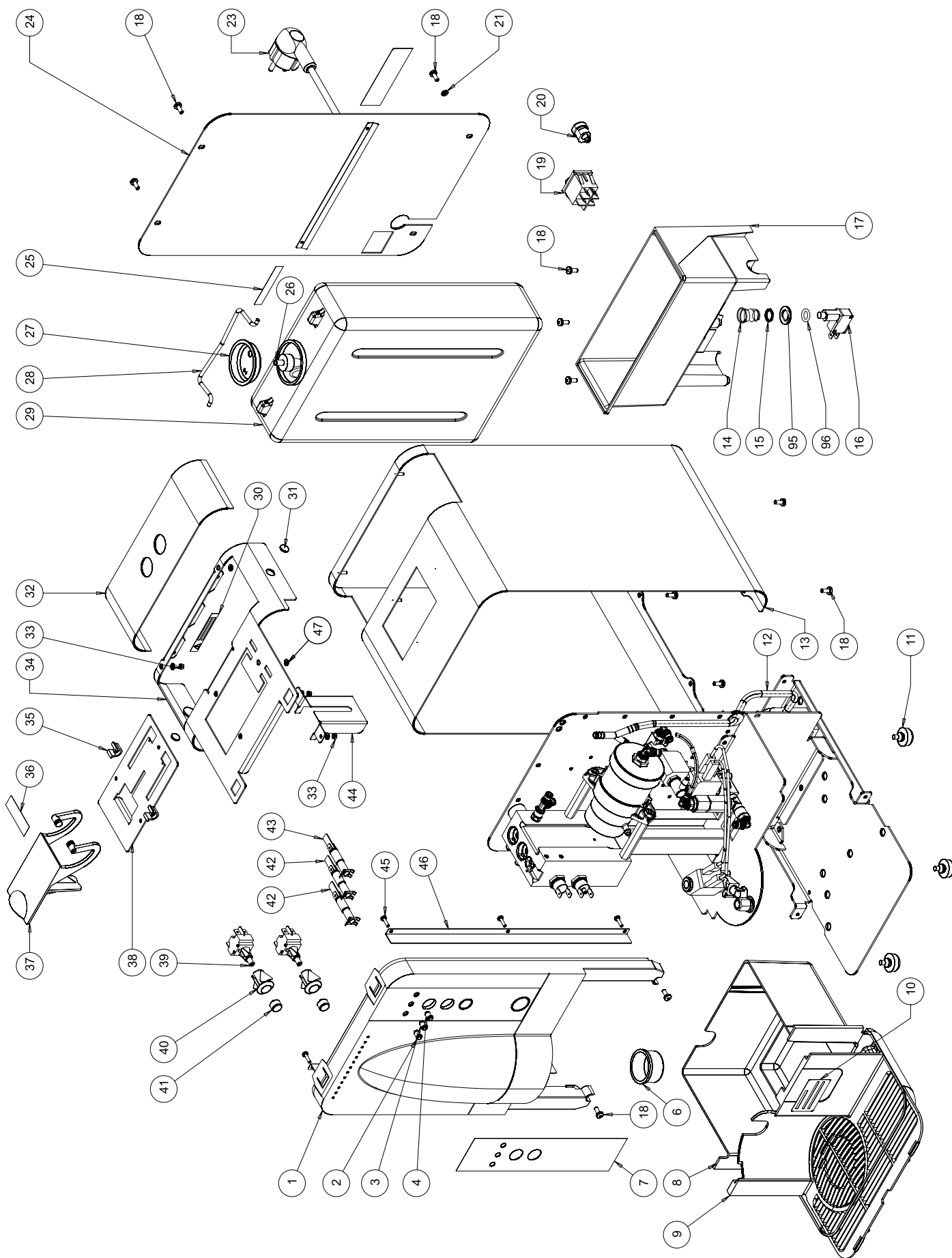
- 1 = Piston
- 2 = Coffee outlet
- 3 = Water outlet
- 4 = Reservoir
- 5 = Pump
- 6 = 3-way solenoid valve
- 7 = Single-acting valve
- 8 = Exchanger
- 9 = 2-way solenoid valve
- 10 = Steam micro pump
- 11 = Drip tray
- 12 = Steam exchanger
- 13 = Steam outlet

WIRING DIAGRAM SR405V

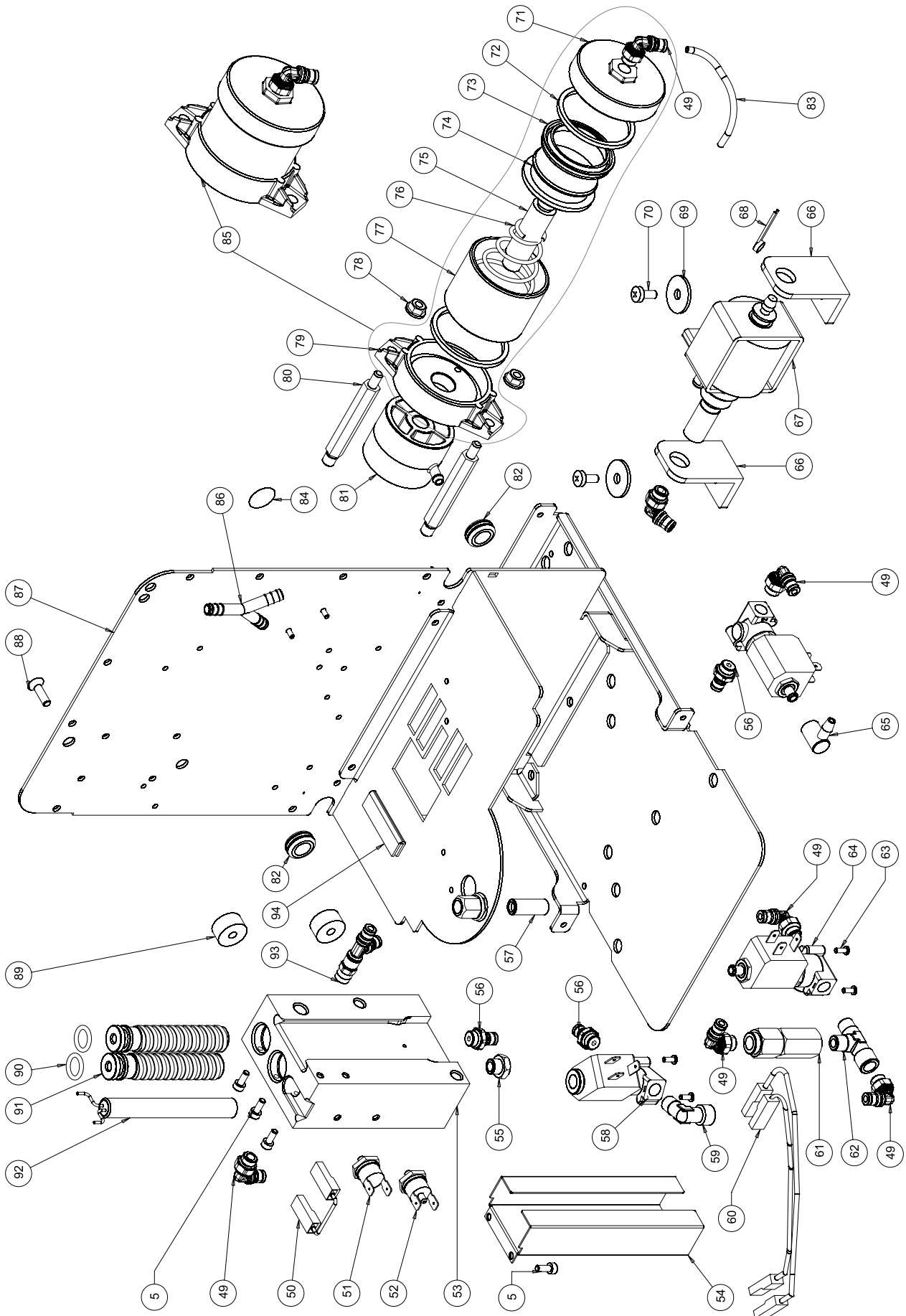


- 1 = On/off switch
- 2 = Power on light
- 3 = No water light
- 4 = 3-way solenoid valve
- 5 = 3-way solenoid valve
- 6 = Pump
- 7 = 2-way solenoid valve
- 8 = Coffee exchanger heating element
- 9 = Temperature indicator light
- 10 = 95° automatic thermostat
- 11 = 125° manual reset thermostat
- 12 = Water switch
- 13 = Coffee switch
- 14 = No water microswitch
- 15 = Pump microswitch
- 16 = 3-way solenoid valve
- 17 = Steam exchanger heating element
- 18 = Steam switch
- 19 = 220° manual reset thermostat
- 20 = 165° automatic thermostat

SR405 EXPLODED



SR405 EXPLODED

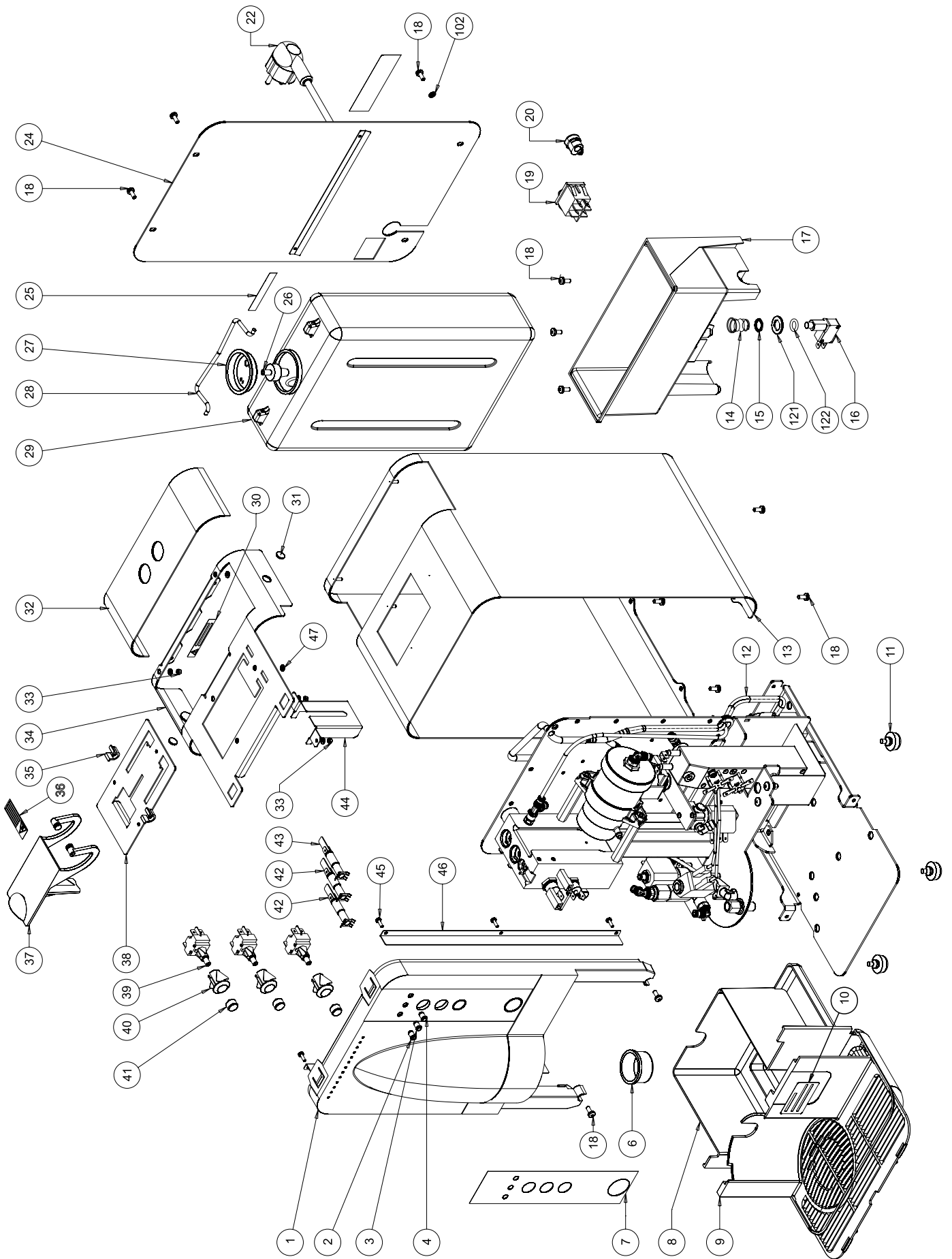


SR405 EXPLODED VIEW CAPTIONS, UPDATE 05-06

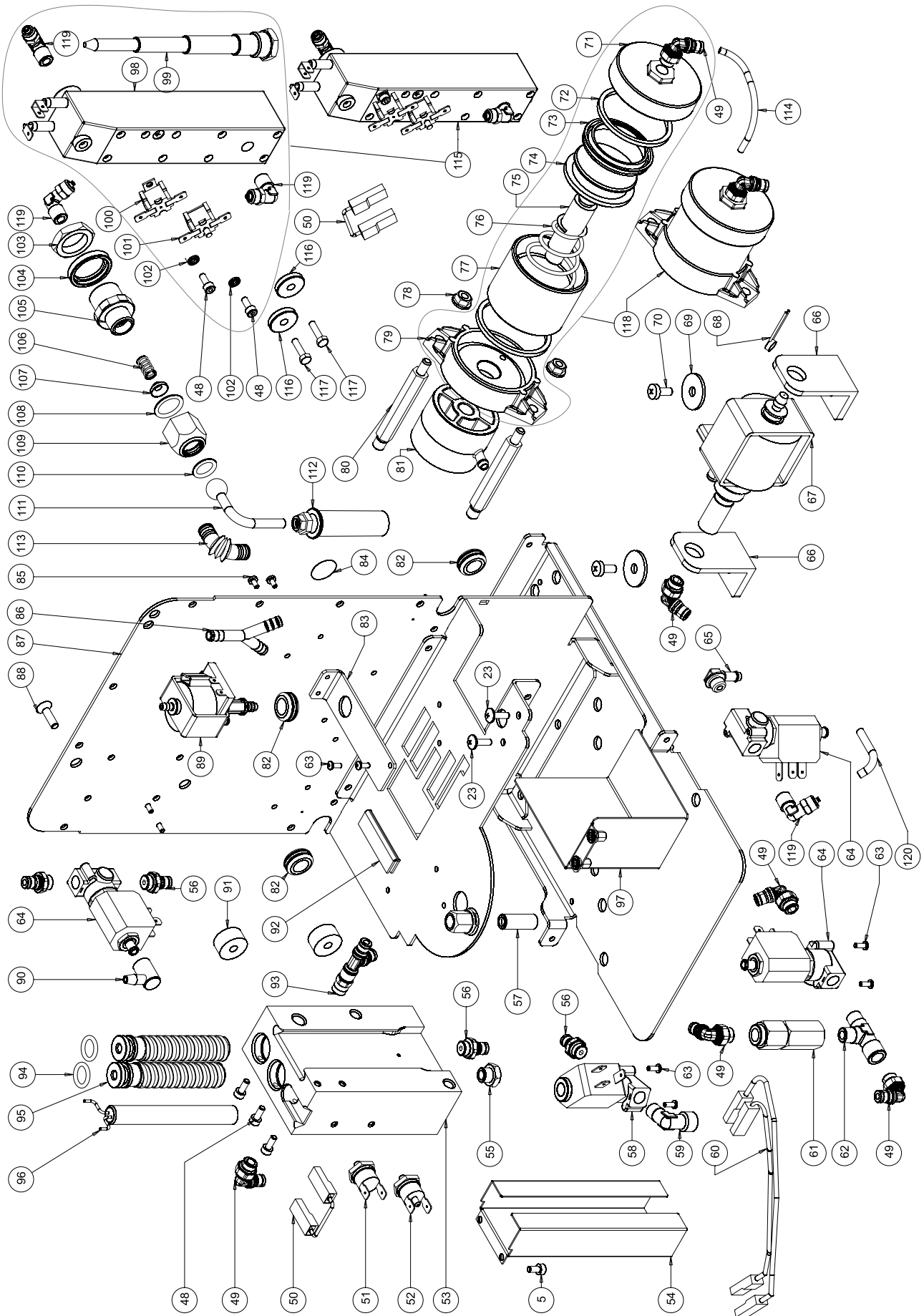
POS.	CODE	DESCRIPTION
1	10038070A	CAPSULE FRONT
2	10556014	FLAT ORANGE LENS
3	10556010	FLAT RED LENS
4	10556012	FLAT GREEN LENS
5	10805071	TCEI M4x10 A2 SCREWS
6	10853020	EMPTY PLASTIC CAPSULE
7	10951000	MAN. SANREMO ADHESIVE LABEL
8	10038050	CAPSULE DISCHARGE TANK
9	10038060	GRILL WITH PARTITION
10	10952618	EMPTY CAPSULE LABEL
11	10352058	FEET
12	10905010	SILICONE TUBE 7x4
13	10024318	GREY CASING SR405
14	10402046	MICRO SPRING
15	10809000	M12x0.75 NUT FOR MICRO
16	10112056	WATER EMPTY MICRO
17	10038010	TANK-PUMP SUPPORT
18	10203068	TC+ SW M4x10 ZN SW SCREWS
19	10111054	MAIN SWITCH
20	10105010	CABLE LEAD
21	10803519	WASHER D4.2 TOOTHED ZN
23	10105130	BLACK 3X1 POWER SUPPLY CABLE
24	10024298	BLACK BACK SR405 - 505
25	10955024	GROUND CONNECTION ADHESIVE LABEL
26	10355178A	TANK IMPURITIES FILTER
27	10355105	TANK STOPPER D.45
28	10353500	TANK HANDLE WITH TONGUES
29	10353243B	3.4 LT TANK WITH RIBBING
30	10955026	CUT VOLTAGE LABEL
31	10112202	D.10 TH.1.5 MAGNET
32	10024224	TANK LID
33	10805510	3MA NUT ZN FINE
34	10024322	GREY CASING ROD SR405 - 505
35	10038030	CAPSULE DOOR HINGE
36	10955012	HOT SURFACE LABEL
37	10038024A	GREY CAPSULE DOOR
38	10024288	GREY FIN PLATE
39	10553080	CM SWITCH
40	10553084	SWITCH SUPPORT
41	10553082	CONVEX KEY
42	10556016	230V NEON SIGNALLER
43	10556018	230V FLUORESCENT SIGNALLER
44	10024290	CAPSULE GUIDE WITHOUT TONGUES
45	10805135A	TC+ 3x10 ZN TT SCREWS
46	10024206	FRONT REINFORCEMENT
47	10806665	FLAT D3 WASHER ZN
49	10853210	RAPID L CONNECTION 4x1/8"M
50	10102205	THERMOSTAT CABLE
51	10111033	95° AUTOMATIC THERMOSTAT
52	10115030	125° THERMOSTAT, MANUAL RESET
53	10040043B	SEPARATE EXCHANGER
54	10024220	LOWER CAPSULE GUIDE
55	10852022	2611 1/8"M STOPPER
56	10853204	STRAIGHT RAPID CONNECTION 4x1/8M
57	10023252	SPOUT-COVER TUBE
58	10303010A	2-WAY 230V SOLENOID VALVE
59	10852210	L CONNECTION 1/8" M/F
60	10102510	SR405 230V CABLING HARNESS
61	10652023A	UNIDIRECTIONAL VALVE
62	10853223	T CONNECTION 1/8" M/M/F
63	10809019	ZNN TBEI M3x8 SCREWS

POS.	CODE	DESCRIPTION
64	10303021	3-WAY 230V SOLENOID VALVE
65	10255030	L-SHAPED PIPETTE
66	10011524	L-SHAPED PUMP SUPPORT
67	10255016	EP4 230V PUMP
68	10255040	THERMO-PROTECTOR
69	10809002	FLAT D6.4X24X2 ZN WASHER
70	10805114	TC+ SW M5x12 ZN SW SCREWS
71	10023290	DIE-CAST UPPER DISK
72	10503018	PISTON UNIT GASKET
73	10503011	LIP GASKET DEM50
74	10023321	PISTON DISK M12
75	10023336	CAPSULE PISTON SHANK
76	10652064A	CONICAL SPRING D.2.5
77	10023304	PISTON UNIT CYLINDER
78	10809012	FLANGED 6MA ZN NUT
79	10023292	INT.78 PISTON FLANGE
80	10023329A	HEX.10 UNIT UPRIGHT
81	10040058	GLASS
82	10105014	CABLE LEAD
83	10909010	D.4x2.5 TEFLON TUBE
84	10955025A	GROUNDING SYMBOL LABEL
85	10052296	PISTON UNIT SR405
86	10853222	Y-SHAPED CONNECTION
87	10024302	BLACK FRAME SR405
88	10801036	TSPEI M5x18 ZN UNI 5933 SCREWS
89	10040005	HEAT EXCHANGE SPACER
90	10402062	OR 115 VITON
91	10040033	HEAT EXCHANGE SPIRAL
92	10115019	D12.5 800W 230V RESISTANCE
93	10853203	RAPID T-SHAPED CONNECTION 4-4-1/8M
94	10505035	BLACK GASKET
95	10502016	WATER MICRO PTFE WASHER
96	10502028	OR 3037 VITON

SR405V EXPLODED



SR405V EXPLODED



SR405 V EXPLODED VIEW CAPTIONS, UPDATE 05-06

POS.	CODE	DESCRIPTION
1	10038070A	CAPSULE FRONT
2	10556014	FLAT ORANGE LENS
3	10556010	FLAT RED LENS
4	10556012	FLAT GREEN LENS
5	10805071	TCEI M4x10 A2 SCREWS
6	10853020	EMPTY PLASTIC CAPSULE
7	10951002	MAN. VAP SANREMO LABEL
8	10038054	WAFFLE DISCHARGE TANK
9	10038060	GRILL WITH PARTITION
10	10952618	EMPTY CAPSULE LABEL
11	10352058	FEET
12	10905010	SILICONE TUBE 7x4
13	10024318	GREY CASING SR405
14	10402046	MICRO SPRING
15	10809000	M12x0.75 NUT FOR MICRO
16	10112056	WATER EMPTY MICRO
17	10038010	TANK-PUMP SUPPORT
18	10203068	TC + SW M4x10 ZN SW SCREWS
19	10111054	MAIN SWITCH
20	10105010	CABLE LEAD
22	10105130	BLACK 3X1 POWER SUPPLY CABLE
23	10805027A	TBL + M4x10 A2 SCREWS
24	10024298	BLACK BACK SR405 - 505
25	10955024	GROUND CONNECTION ADHESIVE LABEL
26	10355178A	TANK IMPURITIES FILTER
27	10355105	TANK STOPPER D.45
28	10353500	TANK HANDLE WITH TONGUES
29	10353243B	3.4 LT TANK WITH RIBBING
30	10955026	CUT VOLTAGE LABEL
31	10112202	D.10 TH.1.5 MAGNET
32	10024224	TANK LID
33	10805510	3MA NUT ZN FINE
34	10024322	GREY CASING ROD SR405 - 505
35	10038030	CAPSULE DOOR HINGE
36	10955012	HOT SURFACE LABEL
37	10038024A	GREY CAPSULE DOOR
38	10024288	GREY FIN PLATE
39	10553080	CM SWITCH
40	10553084	SWITCH SUPPORT
41	10553082	CONVEX KEY
42	10556016	230V NEON SIGNALLER
43	10556018	230V FLUORESCENT SIGNALLER
44	10024290	CAPSULE GUIDE WITHOUT TONGUES
45	10805135A	TC + 3x10 ZN TT SCREWS
46	10024206	FRONT REINFORCEMENT
47	10806665	FLAT D3 WASHER ZN
49	10853210	RAPID L CONNECTION 4x1/8" M
50	10102205	THERMOSTAT CABLE
51	10111033	95° AUTOMATIC THERMOSTAT
52	10115030	125° THERMOSTAT, MANUAL RESET
53	10040043B	SEPARATE EXCHANGER
54	10024220	LOWER CAPSULE GUIDE
55	10852022	2611 1/8" M STOPPER
56	10853204	STRAIGHT RAPID CONNECTION 4x1/8M
57	10023252	SPOUT-COVER TUBE
58	10303010A	2-WAY 230V SOLENOID VALVE
59	10852210	L CONNECTION 1/8" M/F
60	10102512	SR405 230V CABLING HARNESS
61	10652023A	UNIDIRECTIONAL VALVE
62	10853223	T CONNECTION 1/8" M/M/F
63	10809019	ZNN TBEI M3x8 SCREWS
64	10303021	3-WAY 230V SOLENOID VALVE

POS.	CODE	DESCRIPTION
65	10853070	L-SHAPED RUBBER CONNECTION
66	10011524	L-SHAPED PUMP SUPPORT
67	10255016	EP4 230V PUMP
68	10255040	THERMO-PROTECTOR
69	10809002	FLAT D6.4X24X2 ZN WASHER
70	10805114	TC+ SW M5x12 ZN SW SCREWS
71	10023290	DIE-CAST UPPER DISK
72	10503018	PISTON UNIT GASKET
73	10503011	LIP GASKET DEM50
74	10023321	PISTON DISK M12
75	10023336	CAPSULE PISTON SHANK
76	10652064A	CONICAL SPRING D.2.5
77	10023304	PISTON UNIT CYLINDER
78	10809012	FLANGED 6MA ZN NUT
79	10023292	INT.78 PISTON FLANGE
80	10023329A	HEX.10 UNIT UPRIGHT
81	10040058	GLASS
82	10105014	CABLE LEAD
83	10025557	MICRO PUMP SUPPLEMENTARY ROD
84	10955025A	GROUNDING SYMBOL LABEL
85	10805166	TC+ SW M3x6 ZN SW SCREWS
86	10853222	Y-SHAPED CONNECTION
87	10024306	BLACK FRAME SR405 V
88	10801036	TSPEI M5x18 ZN SCREWS
89	10255003	MINI STEAM PUMP 230V
90	10255030	L-SHAPED PIPETTE
91	10040005	HEAT EXCHANGE SPACER
92	10505035	BLACK GASKET
93	10853203	4-4-1/8M RAPID T-SHAPED CONNECTION
94	10402062	OR 115 VITON
95	10040033	HEAT EXCHANGE SPIRAL
96	10115019	D12.5 800W 230V RESISTANCE
97	10024200	STEAM EXCHANGE PROTECTION
98	10040050	1000W 230V STEAM EXCHANGE
99	10040052	STEAM EXCHANGE SPIRAL
100	10115026	AUTOMATIC 165° THERMOSTAT
101	10115024	220° THERMOSTAT WITH MAN. RESET
102	10803519	D4.2 TOOTHED ZN WASHER
103	10853083	CONNECTION NUT 1/2 HEX.26x6
104	10852058	RING NUT FOR STEAM FRONT
105	10852057	STEAM NOZZLE JOINT
106	10656010	SPRING FOR HEAD / JOINT
107	10853051	JOINT PRESS PLATE
108	10502037	OR 120 VITON
109	10402024	TAP JOINT BLACK NUT
110	10402063	OR 115 EPDM
111	10402296	STEAM NOZZLE WITH SPHERE
112	10402302	COMPLETE CAPPUCCINO MAKER
113	10753054	ANTI-BURN JOINT
114	10909010	TEFLON TUBE D.4x2.5
115	10052314	STEAM EXCHANGER UNIT 230V
116	10040008	SPACER D20xD5.5xH4
117	10805083	TE M4x12 ZN SCREWS
118	10052296	PISTON UNIT SR405
119	10353220	BRAIDING CONNECTION L 1/8" M
120	10909015	TEFLON TUBE D.5x3
121	10502016	WATER MICRO WASHER PTFE D20x1.5
122	10502028	OR 3037 VITON